



Erasmus+
let's go!

Erasmus+ 2025/2026

The content:

1. General information about the Erasmus+ programme (*what is it? where to go? Erasmus grant*)
2. Erasmus+ studies – recruitment (*rules & deadlines*)
3. Erasmus+ placements (*rules & deadlines*)
4. Short-term mobilities
5. Other programmes (*city of Wroclaw grant , other exchange programmes: ISEP with the USA, student exchange with non-EU countries*)
6. Contact details

Erasmus

EuRopean Community Action Scheme for the Mobility of University Students
– educational programme founded by the European Commission in 1987.

Polish universities, including the University of Wrocław, joined it in 1998/99.

Previous phases and names of the programme:

1987-1993 – Erasmus

1994-1999 – Socrates I (Socrates/Erasmus)

2000-2006 – Socrates II (Socrates/Erasmus)

2007-2013 – The Lifelong Learning Programme (LLP-Erasmus)

2014-2020 - ERASMUS+ programme

In 2021 we entered the newest 6-year phase
of the Erasmus+ programme planned for years **2021-2027**



ERASMUS PROGRAMME COUNTRIES:

- *all the EU countries*
- *EEA countries (Iceland, Norway, Liechtenstein)*
- *3 candidate countries for joining the EU:*
North Macedonia, Serbia and Turkey
- *Switzerland & UK (only Erasmus studies, no Erasmus placements)*



GENERAL CONDITIONS

Every student and PhD student of the University of Wrocław can participate in the programme.

The candidate's country of **origin, citizenship or age do not matter** in the recruitment process.

At the time of departure, you must **have completed at least the first year** of your studies, which means that you can already start recruitment in the first year *, so that after its completion you can take part in the programme

* faculties have the right to introduce their own regulations in this area, indicating the best semester in terms of the study program for the implementation of the trip

Erasmus+ student status



- ✓ The period of Erasmus studies/placement is **an integral part of the study programme** at the University of Wrocław
- ✓ **All achievements** obtained at the partner university will be **recognized** at the home faculty
- ✓ Information about the completed mobility is entered in the supplement to the diploma, together with a list of subjects or internships completed
- ✓ The student's rights and obligations are detailed in the **Erasmus Student Charter**, which is available the International Office website



Gracias

Grazie

The general **assumption is that you should know the language of the country** you want to go to, although in many countries it is often enough to know **English** (in Scandinavian countries, Belgium, the Netherlands and others).

Studying in a foreign language

Therefore, when planning a trip to study, for example, to Italy or Spain without knowing the local language, **check on the university website whether it offers courses in English** in a given field.

It cannot be absolutely assumed in advance that every university participating in Erasmus+ offers classes in English for every subject.

Danke sehr
Obrigada

Merci

Thank You

Erasmus+ Coordinators

ACADEMIC TEACHERS RESPONSIBLE FOR THE PROGRAMME AT THE FACULTY/DEPARTMENT LEVEL

- ✓ they cooperate with partner universities, sign exchange bilateral agreements
- ✓ annually **prepare recruitment regulations**
- ✓ **recruit students** for Erasmus study and Erasmus internship
- ✓ help the students in the selection of subjects - **LEARNING AGREEMENT**, that will be carried out abroad
- ✓ with their **support the recognition** by the dean's office of the achievements gained abroad takes place.



Bilateral agreements under Erasmus+

Bilateral agreements with partner universities, which establish the details of student exchange under Erasmus+, are signed at the faculty/department level.

It means that every faculty/department at the University of Wrocław has its **own list of partner universities** (bilateral agreements), so a student of e.g. mathematics has a different offer of universities available for exchange than, for example, a student of political science.

The list of bilateral agreements for individual faculties/departments can be checked on the website of your faculty or department as well as on the website of the International Office.

ARQUS – UNIVERSITY ALIANCE

[University of Granada](#)

[Universite Claude Bernard Lyon 1](#)

[Maynooth University](#)

[University of Padua](#)

[University of Graz](#)

[Vilnius University](#)

[University of Minho](#)

[Leipzig University](#)



Possible exchanges in all study fields to all our ARQUS partner universities

<https://arqus-alliance.eu/>

Erasmus + exchange types:

NEW!!!

Erasmus+ studies



going for part of the studies to the partner university,
long-term mobility **2-12 months**
usually for 1 or 2 semesters

Erasmus + internships



professional training at company, institution or organization
located in a country participating in the Erasmus+ programme,
long-term mobility **2-12 months**

Short-term mobility



participation in an intensive short course, in one of the programme countries, such as BIP (Blended Intensive Programme), summer or winter school or another course or internship intended for students.
short-term mobility **5 to 30 days.**

MOBILITY CAPITAL - the number of months spent abroad with Erasmus+

When calculating the mobility capital, one should add up the months of all type of mobilities long or short, studies and internships.

Each student has the opportunity to take part in the programme several times, but it is important to remember about the so-called **mobility capital**.

Mobility capital is calculated separately for each level of study (BA, MA, PhD), i.e. when you upgrade to the next level of study, the "capital meter" is reset.

Mobility capital for one level of study is 12 months (this is the maximum number of months you can spend on Erasmus studies or placements).

In the case of long-cycle studies – 5 years (e.g. law, psychology) the mobility capital is doubled and it is 24 months.

Recruitment rules of participation in Erasmus exchange

issued separately by each faculty or department by its Erasmus Coordinator

the rules define the **details of recruitment**, such as **deadlines** or the level of the required **average grade** (may differ from department to department)

the recruitment rules are **published on the faculty or department websites** and the links are also available on the site of the International Office

Monthly Erasmus+ grant

long-term mobility 2-10 months

Studies	Placements	Destination country
670 EUR	820 EUR	Austria, Belgium, Denmark, Finland, France, Germany, Ireland, Iceland, Italy, Lichtenstein, Luxemburg, Netherlands, Norway, Sweden & associated contries: Switzerland, UK - studies only!)
670 EUR	820 EUR	Czech Republic, Cypus, Estonia, Greece, Latvia, Malta, Portugal, Slovakia, Slovenia, Spain
600 EUR	750 EUR	Bulgaria, Croatia, Hungary, Lithuania, North Macedonia, Romania, Serbia, Turkey

Daily Erasmus+ grant short-term mobility

e.g. BIP- Blended Intensive Mobility - special intensive programmes, summer schools, etc.

LENGTH OF MOBILITY	DAILY RATE	INCLUSION SUPPORT FOR STUDENTS WITH FEWER OPPORTUNITIES
from 5 to 14 days	79 euro/day	100 euro/mobility
from 15 to 30 days	56 euro/day	150 euro /mobility

Travel grant

Distance (according to Erasmus distance calculator)	Green travel	Regular travel
from 10 to 99 km:	56 EUR	28 EUR
from 100 to 499 km:	285 EUR	211 EUR
from 500 to 1 999 km:	417 EUR	309 EUR
from 2 000 to 2 999 km:	535 EUR	395 EUR
from 3 000 to 3 999 km:	785 EUR	580 EUR
from 4 000 to 7 999 km:	1 188 EUR	1 188 EUR
from 8 000 km and more:	1 735 EUR	1 735 EUR

Possible additional support for extra travel days:
up to 6 days - for green travel
2 days - for a regular travel



Erasmus grant

- When planning mobility with the Erasmus+ programme, please note that **Erasmus grant is contributory** and does not fully cover the real costs of living in a host country
- **Maximum period of the grant payment:**
 - Erasmus studies - 2 to 10 months
 - Erasmus internships - 2 to 10 months
 - Erasmus graduate internship - 2 to 5 months
- payments of other scholarships (research, doctoral, etc.) paid at the faculty are not withheld during the Erasmus studies or placements
- **Students with disabilities** may apply for additional funding from the Erasmus programme to cover additional costs; for details please contact the International Office

Tuition fees at the University of Wrocław and Erasmus+



Going for Erasmus studies or placements does not exempt the fee paying students from the fees for studies at the University of Wrocław,

except for the graduate internship, which takes place after graduation.

The payment of the Erasmus grant can be made only after the payment of the tuition fee for the year in which the Erasmus exchange will take place.

There is no tuition fee for studying at a Erasmus host University.



Number of places for Erasmus+ studies and internships

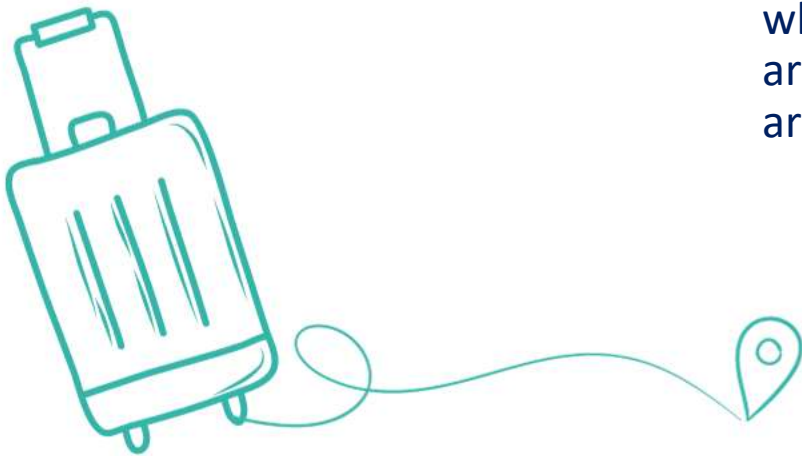
For many years, the number of outgoing students has remained more or less unchanged.

There are about 450 students of UWr going for Erasmus+ studies every year, sometimes it is closer to 500 and sometimes 400,

while as for Erasmus+ internships, around 130 students and graduates are sent to companies abroad.

Unfortunately, this numbers do not cover all the vacancies available for students at University of Wroclaw,

so we can ensure that all candidates who successfully pass the recruitment process can receive funding in accordance with the rules of the Erasmus+ programme.





RECRUITMENT FOR ERASMUS+ STUDIES (LONG-TERM MOBILITY)

International Office
ul. Kuźnicza 35, room 18



Biuro Współpracy Międzynarodowej
anna.sas-korobczak@uwr.edu.pl
joanna.skotnicka@uwr.edu.pl

Erasmus+ language requirement

Students of UWr studying in English are not required to take English knowledge tests, as their language skills were tested before their enrolment at the University of Wrocław.

If the **language of instruction at the host university is not English**, the student is obliged to undergo an interview in a given language at the Foreign Language Centre of the University of Wrocław, unless presenting a language certificate in this language. On-line dates of interview to choose from: **13/12/2024 or 17/01/2025**.

Signing for the interview, as well as sending **certificates of knowledge of a foreign language other than English** (scans) should be done by e-mail to: karolina.manczak@uwr.edu.pl
(deputy head of the UWr Language Centre)

The **results of the interviews and the lists of verified certificates** of other languages will be sent to Erasmus Coordinators at faculties or departments, who are responsible for the recruitment.

Recruitment for Erasmus + studies

takes place at the home faculty or department and is organised by the institute/faculty Erasmus Coordinator

Recruitment period:

January - February 2025

- detailed guidelines are specified in the recruitment rules, which are published by the Erasmus Coordinator at the faculty/department website

Recruitment for Erasmus studies applies to exchanges planned both **in the winter and summer semester of 2025/2026**

Possible **additional recruitment in October 2025**

for Erasmus studies in the summer semester 2025/2026, depending on vacancies available

After the successful completion of the recruitment process of the student, the Erasmus Coordinator assigns a vacant place at the host university in the USOS system.

Following steps to undertake by the student after that:

- to fill in all the required data on your personal profile in USOS, confirming your willingness to go on Erasmus Studies
- to go to your individual account in the **database of the International Office** <https://international-applications.uni.wroc.pl/> and choose an option: Erasmus studies

**Recruitment for Erasmus+ studies ends
on the 28th February 2025**

Preparation before the Erasmus+ trip

Shortly after the 28th February 2025, when the recruitment is completed, a new presentation for the recruited students will be published and it will contain the following information:

nomination of recruited students to the host universities abroad

application process, info about documents and requirements that may be requested by a host university

financial agreement and transfer of Erasmus grant to the students' bank accounts

accommodation, insurance, visas

language courses

departure settlements

TEMPORARY RESIDENCE PERMIT IN POLAND – important notice

Due to the long delays in issuing by the Polish authorities of the decision on the temporary residence permit for non-EU students in Poland,

it is **recommended to start the necessary application procedure as soon as possible**, not waiting until the Polish visa has expired.

International students whose Polish visas expire, and who have not yet legalized their stay in Poland, may face problems with leaving Poland to go for an Erasmus exchange to another European country.





RECRUITMENT FOR ERASMUS+ PLACEMENTS

International Office
ul. Kuźnicza 35, room 18



Biuro Współpracy Międzynarodowej
zofia.pietrkiewicz@uwr.edu.pl

Student placements

to do at the time of the study period,
usually **during the holiday months**,
but also **exceptionally during the semester** –
after obtaining special permission from the
dean of the faculty;

- financing period from 2 to 10 months

Graduate placements

to apply for during the studies,
but to do after obtaining graduate status, i.e. after
defending the thesis;
the graduate placement must be completed within 12
months from the date of defending thesis.

- financing period from 2 to 5 months

Important!

**Recruitment for graduates must take place during the studies,
which is up till BA, MA or PhD defence .**

**If the defence is not held by September 30th of a given year,
please note that after September 30, you lose your student status,
which makes it impossible to apply for a graduate placement.**

When planning Erasmus placement

- **You can find a company yourself.** When writing an e-mail to the company, you can inform them about the rules of Erasmus+ placement by providing them with a useful link:
http://ec.europa.eu/programmes/erasmus-plus/national-agencies_en.htm
- When looking for a company, remember that it is not allowed to do Erasmus placement at a European institution or organization managing Community programmes, to avoid potential conflicts of interest
- You can use the **database of companies**, which are interested in accepting trainees on:
<https://international.uni.wroc.pl/wymiana-wyjazdy/erasmus-praktyki/oferty-praktyk>

IMPORTANT:

You may apply to a university as a host institution of your Erasmus placement, for example to the International Office or to one of the university laboratories

Recruitment for an Erasmus placement is continuous

- it means that you can apply and be recruited at any time, no deadlines

1.

to confirm knowledge of a foreign language - if you need to examine your language, other than English, you can arrange an individual date for an interview at the University Language Centre,
mail to: karolina.manczyk@uwr.edu.pl

3.

to fill in the required fields and prepare an online Application Form (Formularz Zgłoszeniowy)
in your account on
<https://international-applications.uni.wroc.pl/>

2.

to go to your individual account in the database of the International Office
<https://international-applications.uni.wroc.pl/>

and choose an option:
Erasmus placements

4.

Recruitment by Erasmus Coordinator –
individually agreed date

From that moment on, your Erasmus placement is being managed with the support of the International Office

your Erasmus placement application form – *Formularz Zgłoszeniowy* will reach the International Office

Further steps in the application system

<https://international-applications.uni.wroc.pl/>

are being taken, which makes further documents available to download and sign:

Training Agreement, financial agreement

Other important details necessary to prepare the trip (visa, accommodation, insurance) are available at:

<https://international.uni.wroc.pl/en/current-students/exchange-possibilities/erasmus-traineeships#before-the-traineeship>



SHORT-TERM MOBILITIES - BIPS, SUMMER SCHOOLS, SHORT RESEARCH INTERNSHIPS

International Office
ul. Kuźnicza 35, room 18



Uniwersytet
Wrocławski



Biuro Współpracy Międzynarodowej
barbara.skalacka-harrold@uwr.edu.pl
zofia.pietrkiewicz@uwr.edu.pl
joanna.skotnicka@uwr.edu.pl

Short-term mobilities, what is it?

- length: 5 to 30 days
- type: BIP – Blended Intensive Programme (blended means there is an obligatory virtual component in the programme)
- other possible types of mobility:
 - summer or winter school, intensive courses, internship
- mandatory virtual component before, during or after mobility (only BIP)
- 3 ECTS – to obtain obligatory by the students

Where to find offers for short-term mobilities?

- ask your Erasmus coordinator, maybe your Faculty participates in BIP
- follow the announcements posted on the International Office website
- sign in for the International Office newsletter
- search international universities websites

The recruitment for the short-term mobilities is continuous

which means that you can qualify at any time

Proof of language skills;

language certificate or the interview
in a foreign language at the UWr
Language Centre

Application Form
(*Formularz Zgłoszeniowy*)

to be prepared in the International
Office application system

**Recruitment by the Faculty
Erasmus coordinator -
individually agreed dates**

Erasmus Coordinator's signature
on the Application Form means
an acceptance of the short-term
mobility.

Such a document must be
delivered to the International
Office.

A photograph of three young people (two women and one man) smiling and standing in a field of tall grass. The image is overlaid with a semi-transparent teal filter. The text 'OTHER EXCHANGE OFFERS' is centered over the image in a bold, white, sans-serif font.

OTHER EXCHANGE OFFERS

International Office
ul. Kuźnicza 35, room 18



Uniwersytet
Wrocławski



Biuro Współpracy Międzynarodowej
marta.blawat@uwr.edu.pl

WHEN YOU GO ON ERASMUS OR ANY OTHER EXCHANGE, YOU
CAN APPLY FOR ADDITIONAL FUNDING UNDER

Student Scholarship Programme of the Municipal Office of Wrocław

The Programme was initiated by the President of Wrocław and coordinated
by the Academic Cooperation Bureau at the Wrocław City Office.

The scholarships are funded by the commune of Wrocław.

Students can apply directly via the website:

<https://www.wroclaw.pl/akademicki-wroclaw/stypendia-nagrody-granty>

BILATERAL AGREEMENTS

- Students of the University of Wrocław have the opportunity to complete a semester study under university bilateral agreements.
- The exchange program allows you to complete a semester or one-year study period at a partner university without tuition fees.
- Additionally, some of the universities guarantee scholarships or free accommodation.
- The offer includes partner universities from five continents of the world.
- The most popular destinations chosen by students are: South Korea, the USA, Japan, and Canada

BILATERAL AGREEMENTS STUDENT RECRUITMENT

- central recruitment - by the International Office
- completion of recruitment 25.02.2025
- recruitment details and a list of partner universities can be found at the International Office website: <https://international.uni.wroc.pl/en/current-students/exchange-possibilities/bilateral-agreements>

ISEP – STUDENT EXCHANGE WITH THE USA - 1

For over 15 years the University of Wrocław has been the only university in Poland participating in the International Student Exchange Program (ISEP).

The programme offers **one-semester exchange programme at a US University.**

ISEP operates on the basis of a two-way exchange, which means that the outgoing student covers the cost of living * of an American student, and a student from the USA co-finances a student from the University of Wrocław.

As a result, the student being abroad receives a free place in the student dormitory and the meals.

ISEP – STUDENT EXCHANGE WITH THE USA - 2

obligatory one-time payment to the UWr account in the amount of PLN 5,000 (1000 PLN x 5 months) for the maintenance of an American student at UWr.

Additionally, the outgoing student is charged with fees:

- "application fee" of \$ 100
- "acceptance fee" of \$ 395
- visa and insurance costs 425 \$

Participation in the ISEP programme guarantees:

- exemption from tuition fees at an US university
- a place in a student house and board (previously paid for by an US student)
- additionally, the University of Wroclaw co-finances travel costs of UWr students (up to 2000 PLN)

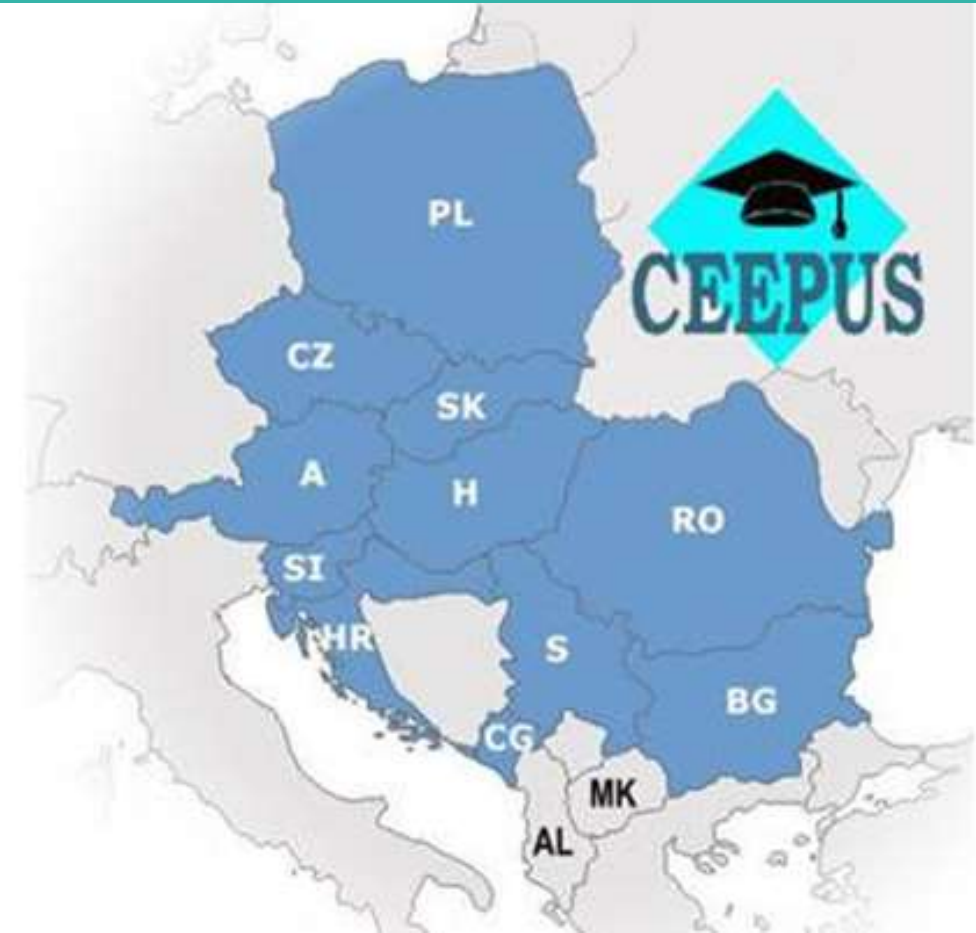
Application deadline: 20th November 2024

More information on ISEP and recruitment on the website:

<https://international.uni.wroc.pl/en/current-students/exchange-possibilities/isep>

CEEPUS – EXCHANGE WITH THE CENTRAL EUROPEAN COUNTRIES

- University of Wrocław students, who are citizens of one of the CEEPUS member states may pursue part of their studies at a selected university in another member state.
- CEEPUS Program member countries are:
Austria, Albania, Bulgaria, Croatia, Czech Republic, Macedonia, Poland, Romania, Serbia, Montenegro, Slovakia, Slovenia and Hungary.



CEEPUS - HOW TO APPLY?

- Eligible students can apply for participation in the programme directly via its website: <http://ceepus.info/#nbb> - by completing the on-line form
- Students can also apply for a scholarship at a partner university within the academic network of which the University of Wroclaw is a partner or outside the network - as a free mover.
- Academic Network Search
<https://www.ceepus.info/public/network/network.aspx#nbb>
- **The scholarship is paid by the host university**
- Additionally, students can apply at the International Office for the **travel cost refund** (based on tickets, up to the limit of travel costs by the cheapest means of transport)
- More details about CEEPUS programme at: <https://international.uni.wroc.pl/en/current-students/exchange-possibilities/ceepus>

International Office

ul. Kuźnicza 35
ground floor, room 18



+48 (0) 71 375-2703

+48 (0) 71 375-2705

INSTITUTIONAL COORDINATOR OF ERASMUS+ PROGRAMME

Barbara Skałacka-Harrold
barbara.skalacka-harrold@uwr.edu.pl

ERASMUS + STUDIES

Anna Sas-Korobczak
anna.sas-korobczak@uwr.edu.pl

Joanna Skotnicka
joanna.skotnicka@uwr.edu.pl

ERASMUS + PLACEMENTS

Zofia Pietrzekiewicz
zofia.pietrzekiewicz@uwr.edu.pl

OTHER EXCHANGE PROGRAMMES

Marta Bławat
marta.blawat@uwr.edu.pl

If you still hesitate, read the reports of former Erasmus students, then some of your doubts may disappear...

Why not take part in the recruitment and experience the benefits of exchange programmes!

Remember that not everyone has been given this unique opportunity!

And most importantly, you can count on the help of our office at every stage 😊

More information at the International Office website:

<https://international.uni.wroc.pl/>

