



# UWr

Guidebook

Faculty of Social Science

University of Wrocław



Uniwersytet  
Wrocławski



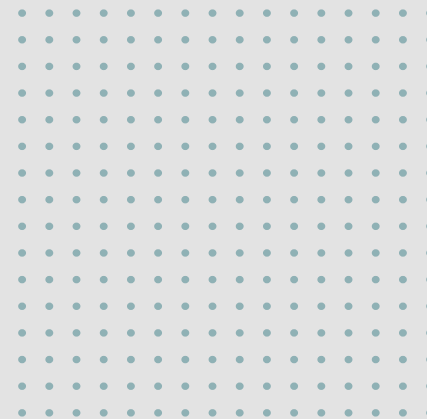
**RESEARCH  
UNIVERSITY**  
EXCELLENCE INITIATIVE



Welcome to the Faculty of Social Sciences in the new academic year. We are happy that you chose our teaching offer and that you are going to spend the upcoming months at the University of Wrocław.

So as to make your first days at our campus a little easier, we provide you with a short brochure including useful and important information concerning the structure of the University (p. 6), map of the campus (p. 12-13 and p. 28), suggestions how to reach the campus (p. 13) and where you can receive your student ID (p. 19), as well as – where to seek help (Welcome Center – p. 16)

Here we go.





## Short Info About The University of Wrocław

This is one of the oldest scientific institutions in Wrocław, its history reaching 21st October 1702. On that day in Vienna, the emperor Leopold I Habsburg issued a document establishing the Leopoldina University. Its inauguration was held on the 15th November 1702. At first, the University included two faculties and it was supervised by the Jesuit order. Almost a century later, in 1811, Wrocław-based Catholic Leopoldina was merged with the protestant Viadrina University of Frankfurt on the Oder. Those two scientific institutions formed together a state university<sup>1</sup>. The University's history is as complex as the history of Lower Silesia. *Universitas Litterarum Vratislaviensis* included five faculties: Catholic theology, Protestant theology, law, medicine and philosophy. In 1911, the University was renamed to Silesian Friedrich Wilhelm University. The academy's autonomy ended as WWII came to close in 1945<sup>2</sup>. By a decision of the Provisional Government of National Unity of the 24th August 1945, the University was merged with the Technical University of Wrocław. The two institutions became state academic schools and functioned as one until the academic year of 1951/1952. At that time, there were six University faculties: law and administration, humanities, mathematics and life sciences, medicine and pharmaceutical science, veterinary medicine, agriculture with horticulture, as well as four Technical University faculties: chemistry, mechanics and electronics, construction and mining with ironworks faculty<sup>3</sup>.

When the Technical University became an independent institution, the number of faculties and majors was reduced. For instance – the Faculty of Mathematics, Physics and Chemistry was divided into two parts: Mathematics and

1 History of the University of Wrocław, <https://uni.wroc.pl/en/history-of-the-university-of-wroclaw/> (accessed on 23.07.2022).

2 Ibidem.

3 Dekret TRJZ z 24 VIII 1945 roku o przekształceniu Uniwersytetu Wrocławskiego i Politechniki Wrocławskiej na polskie państwowe szkoły akademickie (Dz. U. nr 34, poz. 207) – the Decree of the Provisional Government of National Unity of 24 VIII 1945 on transformation of the University of Wrocław and Technical University of Wrocław into Polish state academic schools (Journal of Laws no. 34, item 207).



Physics remained at the University of Wrocław, and the Faculty of Chemistry became a part of the Technical University. In 1952 by a resolution of the Council of Ministers, the University was named after Bolesław Bierut. This name was used until 1989. During its history, the University built its position in the city, region and in science.

Currently, the University of Wrocław has ten faculties: Biotechnology, Chemistry, Letters, Physics and Astronomy, Mathematics and Computer Science, Biological Sciences, Historical and Pedagogical Sciences, Social Sciences, Law, Administration and Economics, Earth Sciences and Environmental Management, Interfaculty College of Inter-area Individual Studies and Interfaculty Studies of Environmental Protection<sup>4</sup>. The University's Main Building is located at 1, Uniwersytecki Square.



This is where the administration departments are located. On the first floor of the Main Building you will find:

- **International Office**

(this is where you went to submit your study documents)  
<https://international.uni.wroc.pl/en/international-office/>;

- **Welcome Point**

<https://international.uni.wroc.pl/en/welcome>

- **Department of Student Affairs**

the place where you can handle all issues concerning dormitories, insurance or student organisations;

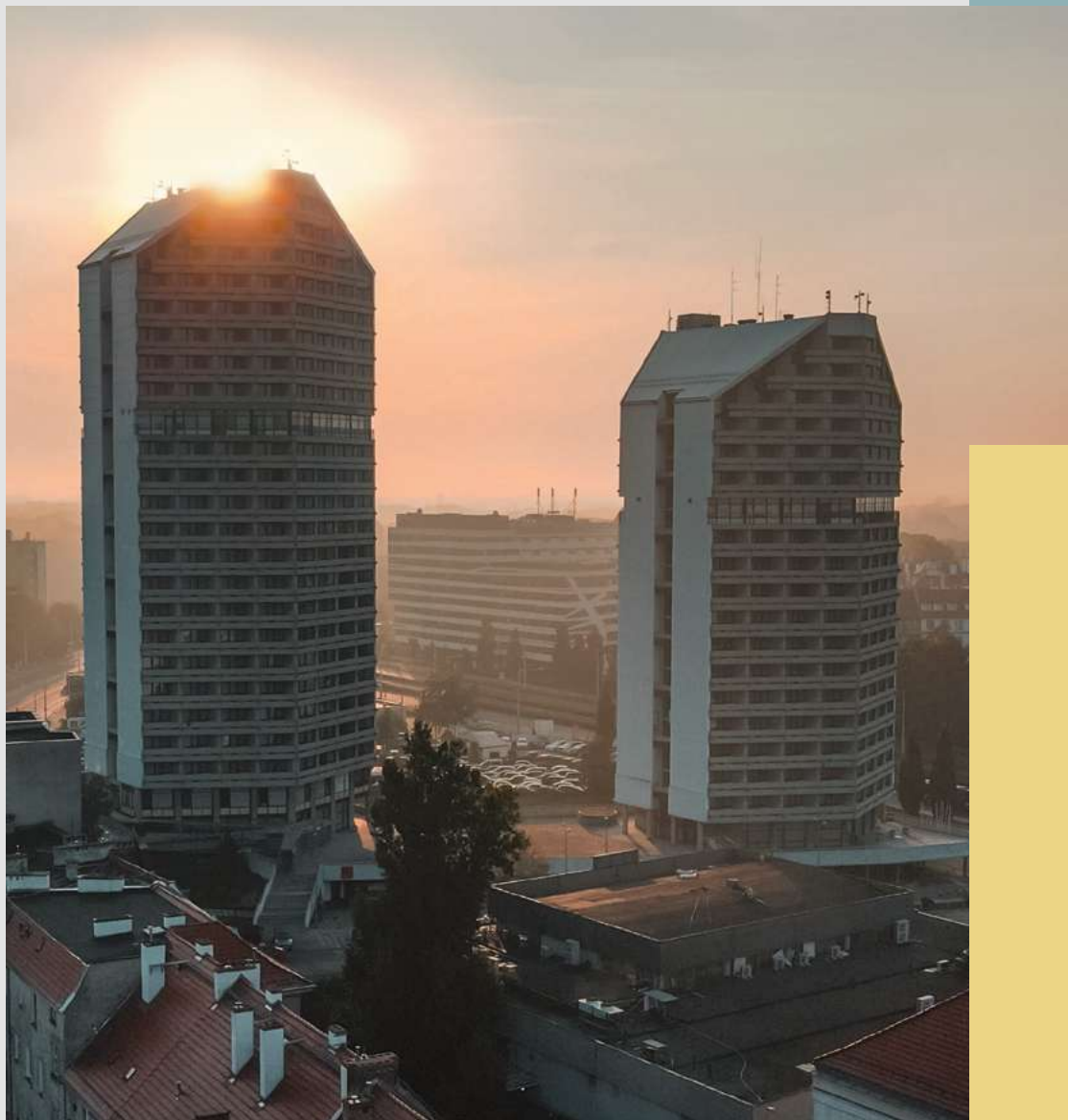
The Main Building of the University of Wrocław hosts also a museum, and the Mathematical Tower offers an excellent panorama of the entire Wrocław (really worth all those steps up!). Students can enter it for free, so we warmly recommend a visit to the Museum and the Mathematical Tower: <http://muzeum.uni.wroc.pl/godziny-otwarcia/>



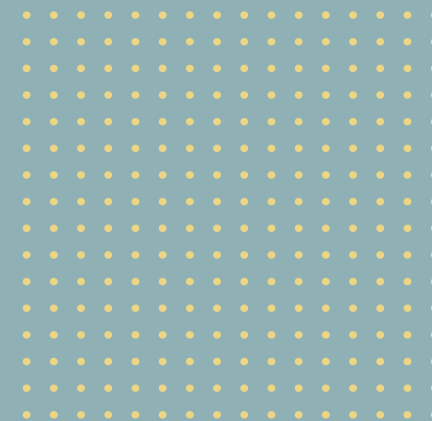
The University Museum includes also the Leopoldine Hall – a unique lay monument of late Baroque. The place is especially interesting for you, as you can visit it not only as a museum, but also at the end of your studies – at the graduation ceremony.

In your free time, especially in spring or summer, you may also enjoy a walk at the University's Botanical Garden - <https://www.ogrodbotaniczny.wroclaw.pl/>

The University of Wrocław has several dormitories: Ołówek, Kredka, Dwudziestolatka, Parawanowiec, Słowianka. All these buildings are situated near Grunwaldzki square.



## Dormitories



**Information about dormitory is provided by the Department of Student Affairs**

pl. Uniwersytecki 1 (Main Building, room 127)  
50-137 Wrocław  
tel. +48 71 343 06 18  
e-mail: [sprawystudenckie@uwr.edu.pl](mailto:sprawystudenckie@uwr.edu.pl)

Also, if you are looking for a flat, think of neighbourhoods on the route of municipal buses no. **A, 116, 119**. Unfortunately, you cannot reach the faculty by tram.

# Faculty of Social Sciences at a Glance

The campus of the Faculty of Social Sciences is located in northern Wrocław, in the borough of Karłowice-Różanka. During the communist time, today's Faculty's buildings served as barracks for the Soviet army. In the 1990s the developed part of the military barracks was handed over to civilian authorities and then further to the University of Wrocław. This place has been the site of the Faculty of Social Sciences since 1998. It was then when the Institute of Political Science, Institute of Philosophy, Institute of Sociology, Institute of German and European Studies, as well as Chair of Logic and Science Methodology were joined in a single faculty.

Currently, the three buildings of the Faculty of Social Sciences host: the Institute of Political Science, Institute of Philosophy, Institute of Sociology, Institute of International Studies, Chair of European Studies and Chair of Logic and Science Methodology.

At the campus, we also have the Library of the Faculty of Social Sciences (how to join the library – p. 20)



The Faculty is managed by the Dean College, elected for a four-year term. Its current members are:

● **Dean**

prof. dr hab. Robert Alberski  
 robert.alberski@uwr.edu.pl

● **Vice Dean for International Relations**

dr hab. Magdalena Ratajczak, prof. UWr.  
 magdalena.ratajczak@uwr.edu.pl

● **Vice Dean for Education**

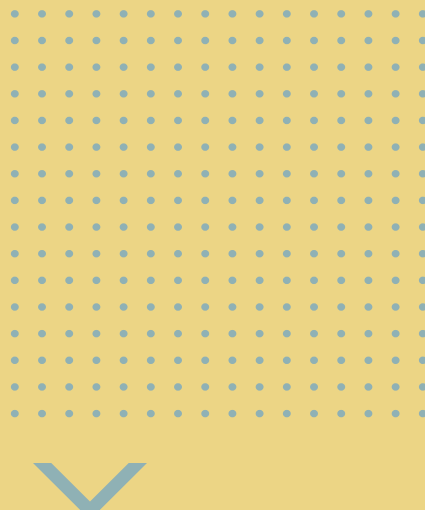
dr hab. Marta Ryniejska-Kiełdanowicz  
 marta.ryniejska-kieldanowicz@uwr.edu.pl

● **Vice Dean for Science and Development**

dr hab. Mateusz Błaszczuk, prof. UWr.  
 mateusz.blaszczuk@uwr.edu.pl

● **Vice-Dean for Student Affairs**

dr hab. Jacek Zieliński  
 jacek.zielinski@uwr.edu.pl



The Faculty of Social Sciences is somewhat away from the Market Square, but not difficult to reach. You just need to take the right bus:

- **116** from Grunwaldzki Square (close to the dormitories)
- **A** from the city centre or the Main Railway Station
- **119** from the western part of the city

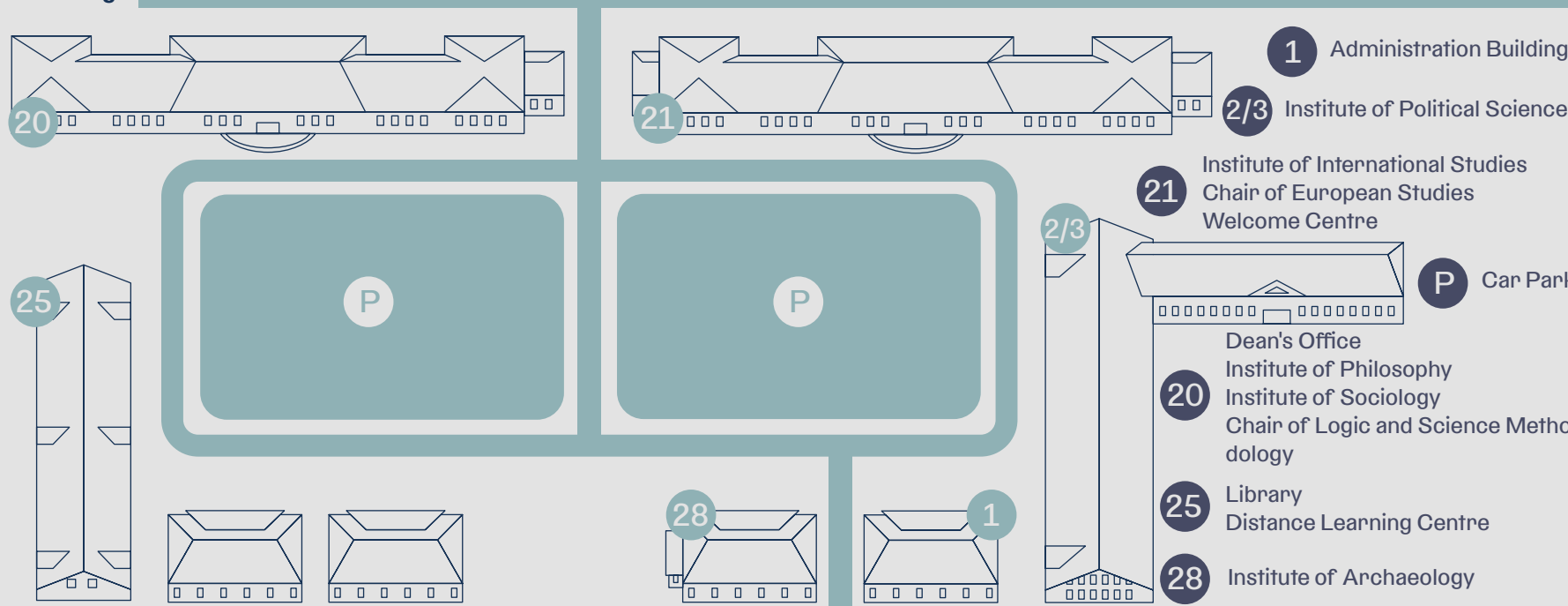
Useful apps showing bus timetables:

- **jakdojade.pl**
- **google.maps.com**

We recommend that you get yourself an Urban Card, allowing you to buy tickets for a month or a term: <https://www.urbancard.pl/>



The map of the campus will help you find the right building.



# How to reach the Campus of the Faculty of Social Sciences?

# What? Where? How? – Or what is handled by the Dean's Office and Secretariat?

You often e-mail us with these questions, so we will provide you with a simple answer: what is done by the dean's office and what issues are handled by the teaching secretariats (separate for each Institute/Chair).

## Dean's Office

issuing various certificates for students

delivering student albums, IDs, health charts and diplomas

completion confirmations in student IDs and session charts

calculation of mean grades at the end of terms

keeping students' personal files

preparation of internships

## Institute/Chair

Each Institute/Chair has its own teaching secretariat. You should go there, when:

you want to enrol to a class

organisation of student groups and seminar groups

you need information on schedules

you want to contact lecturers or instructors from the unit in question



From 2021, the Faculty of Social Sciences has an active Welcome Centre. Its main objective is to provide day-to-day support to foreign students. You have doubts? Questions? You want to take part in a workshop? Trip? Or maybe you have your own ideas or initiatives? Come and see Katarzyna Kvapilikova – foreign students support specialist:

e-mail: [WelcomeCenterWNS@uwr.edu.pl](mailto:WelcomeCenterWNS@uwr.edu.pl)

The mission of the Welcome Centre is to integrate foreign and Polish students. We do our best to help foreign students feel at home! In detail: at the Welcome Centre you can get diverse help – from support in legalisation of your stay, to organisation of your health insurance, to solving administrative/bureaucratic problems at the University, to the basic everyday problems, e.g. buying a monthly public transport ticket, organising an English-language medical appointment, etc.

You can also follow the Welcome Centre's fan page, where you will find info on all planned events: <https://www.facebook.com/Welcome-Center-WNS-UWR-100184999400147>

# Welcome Centre



The first people you contacted when enrolling to the studies, were exactly the English-language studies coordinators. Each programme has a coordinator you can contact with all questions concerning the curriculum, schedules and everyday functioning at the faculty. Certainly, you have already met your coordinators at the orientation days. Our coordinators are always willing to help you and give you advice. They are available by e-mail.

#### **Coordinators of English-language studies at the Faculty**

- **BA International Relations – Global Studies**

dr Marcin Koczan: marcin.koczan@uwr.edu.pl

- **BA Political Science (4 specialisations)**

dr Michał Kuś: michal.kus2@uwr.edu.pl;

dr hab. Piotr Sula: piotr.sula@uwr.edu.pl

- **MA European Studies**

dr Paula Wiśniewska: paula.wisniewska@uwr.edu.pl

- **MA Global Communication**

dr Urszula Lisowska: urszula.lisowska2@uwr.edu.pl

- **MA International Relations – Global Studies**

dr Łukasz Fijałkowski: lukasz.fijalkowski@uwr.edu.pl

- **MA Political Science**

dr Michał Kuś: michal.kus2@uwr.edu.pl;

dr hab. Piotr Sula: piotr.sula@uwr.edu.pl

- **MA Sociology – Intercultural Mediation**

dr Mateusz Karolak: mateusz.karolak@uwr.edu.pl

- **PhD Programme in Philosophy Doctoral School**

dr Urszula Lisowska: urszula.lisowska2@uwr.edu.pl

- **PhD Programme in Political and Administrative Sciences Doctoral School**

dr hab. Agnieszka Makarewicz:

agnieszka.makarewicz@uwr.edu.pl

- **PhD Programme in Sociology Doctoral School**

dr Łukasz Moll: lukasz.moll@uwr.edu.pl

## Coordinators of english-language Programmes at the Faculty

## Library

The Main Library of the University of Wrocław is located at ul. Fryderyka Joliot-Curie 12, accessible from the Faculty of Social Sciences by bus no. 116.



To launch your library account, you should take your student ID and clearance checklist to the library. There, you will learn about how to use the library space, how to order books and use free access.

Learning with a view on the Oder is a real pleasure!

<https://www.bu.uni.wroc.pl/en>

At the campus of the Faculty of Social Sciences, we have a library, too. You can collect ordered books, find a place to study or read books available at the reading room there. At the beginning of the term, there is training to teach you how to use the library.



Remember to enter the right numbers when ordering books for borrowing:

- 20900xxxxxx (student no.)
- 30900xxxxxx (student no.)
- You can also use a convenient Proxy tool allowing you to access digital collections from any place (including your home). Instructions how to install it can be found here: <https://www.bu.uni.wroc.pl/en/online-services-proxy>

## Where to eat close to the campus

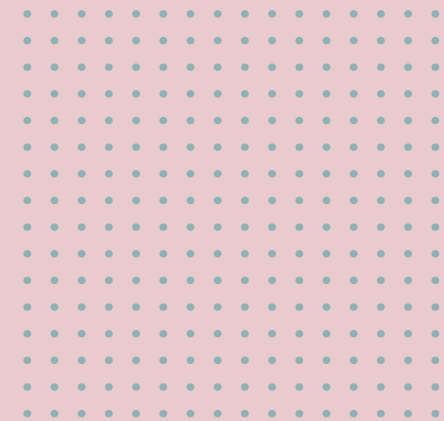
Knowledge is not enough to keep one going. If you feel hungry, you can resort to the outlet on the ground floor of the Institute of International Studies. At a longer break, you can go to the bar on the ground floor of the Institute of Political Science. Near the campus, you will also find some smaller outlets:

**Chwila Moment Coffee & Food**  
Sołtysowicka 15b

**Nasz Doner**  
Sołtysowicka 15a

**Pico Bello**  
Jana Kasprowicza 24

In proximity, there are also shops Netto, Kaufland and a pharmacy.



# Polish language courses

Polish language is not really easy, but it is worth learning. Each student has Polish language classes, provided by the School of Polish Language and Culture. The classes are held once a week. Placement test and information on the classes are always sent to students' e-mail boxes at the beginning of each academic year.

## **School of Polish Language and Culture for Foreigners**

pl. Nankiera 15b (room 6)

50-140 Wrocław

Polska

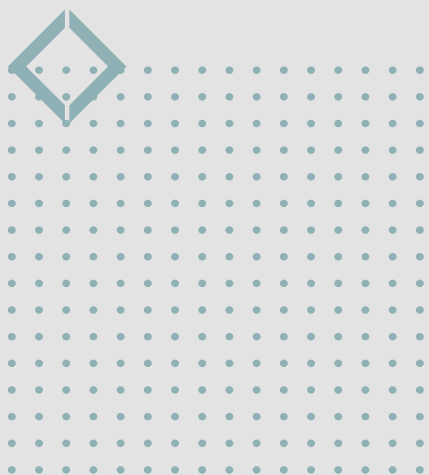
tel.: +48 71 3752570

e-mail: [sjpkc@uwr.edu.pl](mailto:sjpkc@uwr.edu.pl)

Website: <http://www.sjpik.uni.wroc.pl/en>



While studying at the University of Wrocław, you will have an opportunity to participate in the Erasmus+ exchange programme. The Faculty of Social Sciences has signed a number of agreements with academic institutions throughout Europe. Each term, Erasmus coordinators (<https://international.uni.wroc.pl/en/incoming-exchange-students/erasmus-exchange/exchange-coordinators>) organise meetings concerning formalities related to the exchange, as well as terms on which students can participate. Keep your eye on the information and contact the coordinator at your Institute/Chair.



## Erasmus + Programme

## UWr e-mail UWr and USOS – Logging in

Each student of the University has their own e-mail account to be used to contact instructors and to receive information from administrative staff.

### How to log in to the account?

1. To log in to your university e-mail address, please visit <https://login.microsoftonline.com/> and enter your username. Your username consists of your index/album number (6 digit number) and domain @uwr.edu.pl (e.g. 123456@uwr.edu.pl). Use the option “reset password” to receive a new password to your e-mail address (the one you have used in the process of admission).

Another important tool for all students is USOS, including information on the assigned courses and grades, as well as a module concerning submission of applications:

2. To start using your USOS account please visit the website: <https://login.uni.wroc.pl/cas/login>. Your login is your 6-digit index/album number. Please use the option “forgotten password”. You will receive your new password to your University of Wrocław e-mail account. In case of any problems please contact UWr. IT section: [onhelpdesk@uwr.edu.pl](mailto:onhelpdesk@uwr.edu.pl)

### EDUroam

Is it even possible to go on without internet connection? Well... That’s why it’s good to know how to use edu-roam network at the campus? So how?

Eduroam is a safe service allowing students and staff of universities to connect to a wireless network. The credentials are the login and password from your home university, to be used at all places where it is available.

Students and staff of the University of Wrocław, when connecting to the Eduroam service, should use the login and password used for the e-mail @uwr.edu.pl.



<https://uni.wroc.pl/>

<https://www.facebook.com/uniwroc/>

<https://wns.uni.wroc.pl/>

<https://studysocialsciences.uni.wroc.pl/>



If you need to help, don't be ashamed to ask. The University of Wrocław offers psychological help, including an out-patient psychology office. At the Institute of Psychology of the University of Wrocław, there is the Centre for Psychological Consultation and Guidance, where students of psychology offer psychological support for free to all who need it.

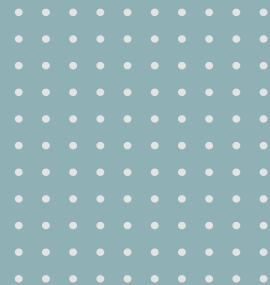
More info about available help options can be found here: <https://uni.wroc.pl/en/helpful-uwrr/psychological-support/>

The Faculty of Social Sciences has also the Dean's Representative for Equal Treatment, dr Olga Nowaczyk. Anyone who has encountered discrimination or unequal treatment – or witnessed them – can contact her at: [olga.nowaczyk@uwr.edu.pl](mailto:olga.nowaczyk@uwr.edu.pl)

In any difficult situation you will receive help from the programme coordinators as well as the deans.

## Psychological support

## Useful websites at UWr



## In conclusion

## Emergency numbers

**997 - Police**

**998 – State Firefighters**

**999 – State Paramedics**

**112 – emergency number to be dialled on a cell phone**

If you have any further questions, you can contact Welcome Centre, Welcome Point and programme coordinators.

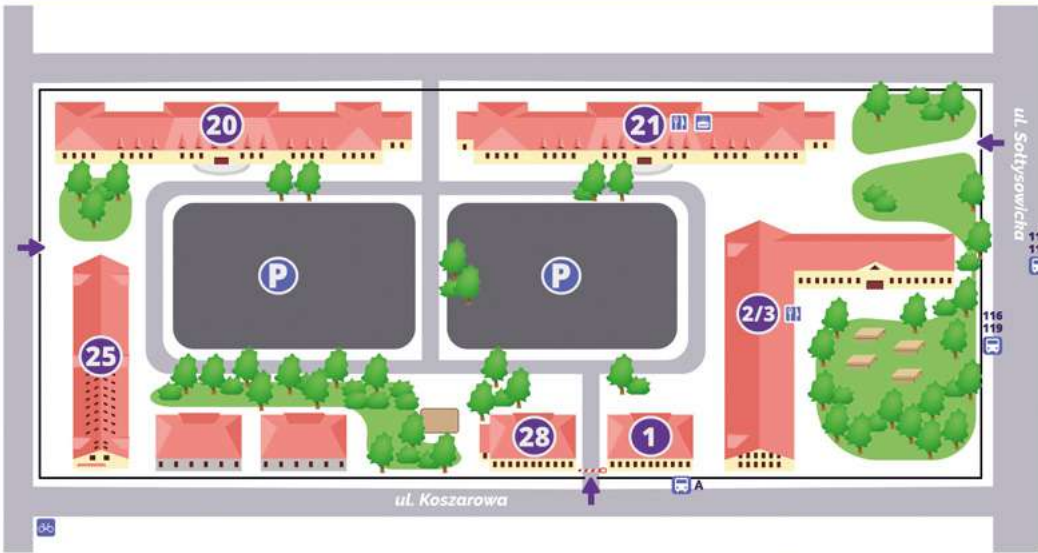
Enjoy the academic year!

And one more thing! Here is a place for your schedule and a link to information on organisation of the academic year: <https://uwr.edu.pl/organizacja-roku-akademickiego/>

(check it, because you will have Friday classes on some Thursdays and Wednesday on some Tuesdays)



CAMPUS MAP FACULTY OF SOCIAL SCIENCES UNIVERSITY OF WROCLAW  
 MAPA KAMPUSU WYDZIAŁ NAUK SPOŁECZNYCH UNIwersYTET WROCLAWSKI



- 2/3** Institute of Political Science  
Instytut Politologii
- 21** Institute of International Studies  
Instytut Studiów Międzynarodowych  
Chair of European Studies  
Katedra Studiów Europejskich  
Welcome Center
- 20** Dean's Office  
Dziekanat  
Institute of Philosophy  
Instytut Filozofii  
Institute of Sociology  
Instytut Socjologii  
Chair Of Logic and Science Methodology  
Katedra Logiki i Metodologii Nauk
- 25** Library  
Biblioteka  
Distance Learning Centre  
Centrum Kształcenia na Odległość
- 28** Institute of Archaeology  
Instytut Archeologii
- 1** Administration Building  
Budynek Administracyjny



	MONDAY	TUESDAY	WEDNESDAY	THURSDAY	FRIDAY	SATURDAY	SUNDAY
7							
8							
9							
10							
11							
12							
13							
14							
15							
16							
17							
18							
19							
20							



Substantive content development: dr Paula Wiśniewska

Graphic design: Paweł Piotrowski

Photographs: Magdalena Marcula, Alina Metelytsia, Paweł Piotrowski, Faculty of Social Sciences own materials, Communication Department own materials.

